



**FEATURE FILM INVESTMENT OPPORTUNITY**

# **THE RESCUE**

**SAVE OUR SOULS**

TRUE-LIFE SURVIVAL DRAMA

# THE RESCUE

Based on the true story of Amy and Craig Helm, a couple’s fight to survive a deadly Alaskan storm becomes a powerful journey of faith, love, and rediscovering who they are when everything they thought they were is stripped away.

## SYNOPSIS

When Amy and Craig Helm set out on a backcountry trip in the Alaskan wilderness, they expect adventure, not catastrophe. A sudden storm traps them atop a remote mountain, cut off from all help and hope. Battling hypothermia, exhaustion, and the growing certainty of death, they’re pushed to the breaking point.

As the hours stretch into days, their fight for survival becomes something deeper: a reckoning with identity, faith, and love. Stripped of safety, control, and everything they thought defined them, Amy and Craig must rediscover who they are in the heart of the storm. Through flashbacks and fractured memories, the cracks in their marriage surface alongside moments of grace that refuse to die. But the rescue is only the beginning.

When Amy survives with devastating injuries, the battle moves from the mountain to the long road of recovery, where grief, faith, and unanswered questions collide. Her body is scarred, but her spirit is awakening. Through loss, surrender, and unexpected hope, Amy discovers a truth more powerful than the storm itself, sometimes the storm doesn’t destroy who we are... it reveals it.

## THEME

A deeply human story about identity, endurance, and faith. Through the crucible of survival and loss, The Rescue uncovers the deeper truth of identity: that surrender, not strength, is the path to redemption.

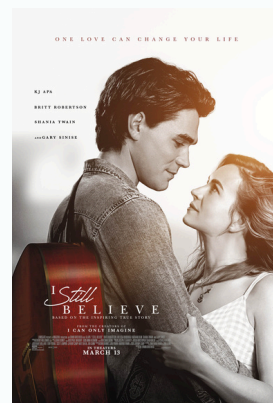
## GENRE COMPARISONS



THE MOUNTAIN BETWEEN US



ADRIFT

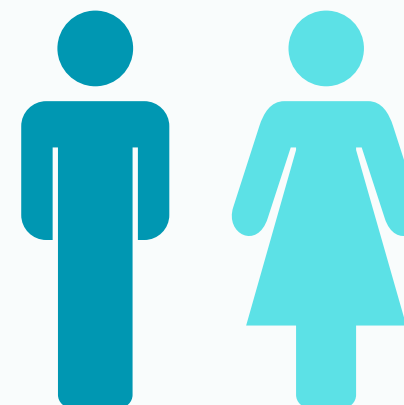


I STILL BELIEVE

## TIMING

PRINCIPAL PHOTOGRAPHY  
Early 2026

DELIVERY  
Late 2026 / Early 2027



50% MALE

50% FEMALE

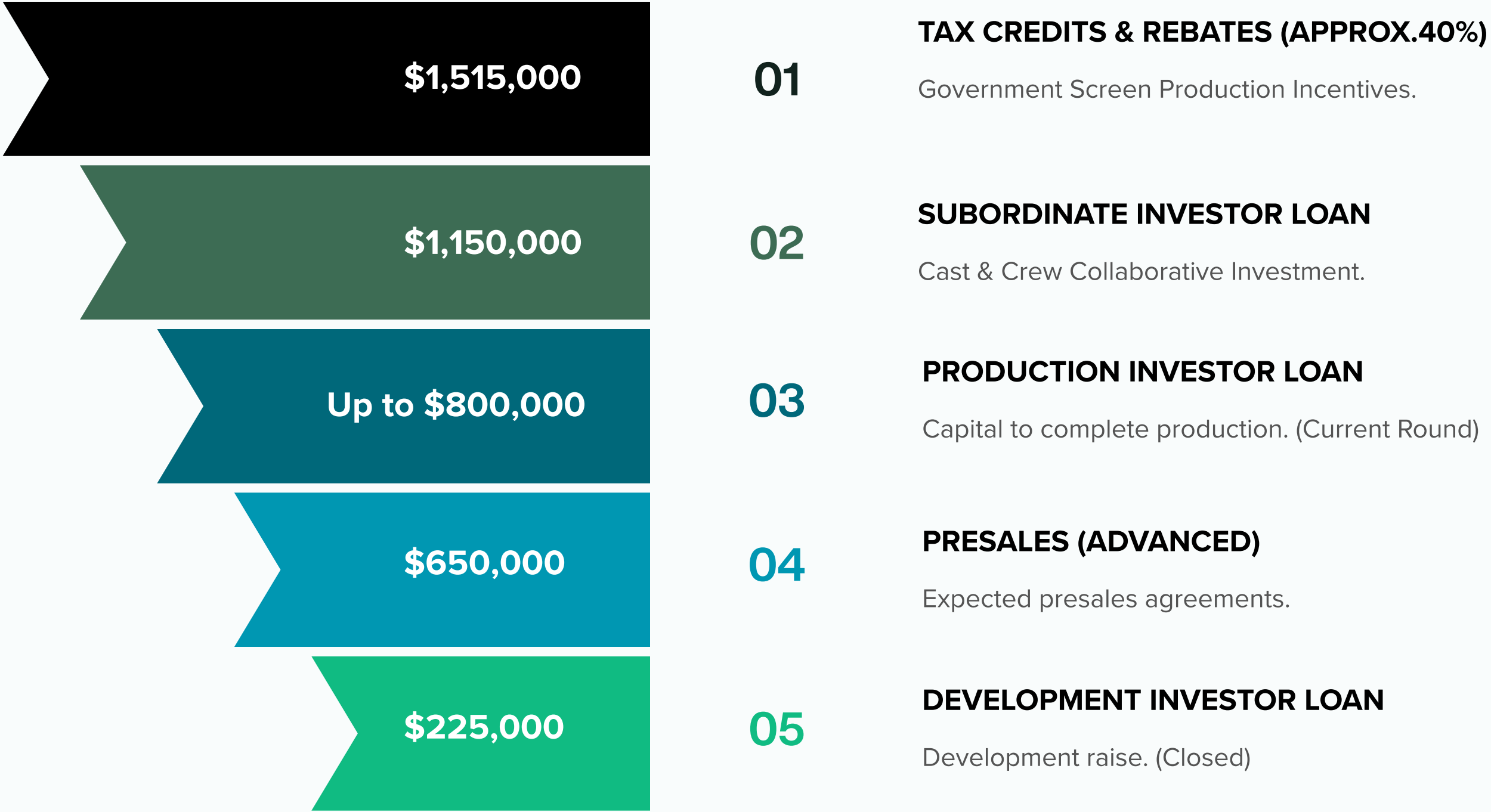
## TARGET AUDIENCE

Mainstream and faith-based viewers drawn to true stories of courage, identity, and hope.

## TOPE

Visceral, emotional, and awe-inspiring. A grounded survival thriller that fuses cinematic intensity with spiritual intimacy.

# THE RESCUE BUDGET: USD \$4,340,000 (subject to location and other variables)



**Total Combined Funds: USD \$4,340,000**

(Total Funds via Secured Debt: \$2,165,000)

# INVESTMENT OPPORTUNITY

## DEVELOPMENT: UP TO \$225,000



01

**Benefit: 120% ROI + 2x “Investment Value” per \$1 invested\***

Supports early-stage creative work such as script development, story packaging, legal setup, and key attachments. Because early investors take on the highest risk, they receive the strongest upside, every \$1 invested counts as \$2 when calculating backend participation.

CLOSED

## PRODUCTION: UP TO \$800,000



02

**Benefit: 120% ROI + 1.2x “Investment Value” per \$1 invested\***

This funds the main production phase of the film, including cast, crew, locations, and equipment. Production investors are prioritised alongside Development investors in the recoupment waterfall and receive a generous uplift, every \$1 invested counts as \$1.20 toward backend returns.

## SUBORDINATE: UP TO \$1,150,000



03

**Benefit: 120% ROI + 0.5x “Investment Value” per \$1 invested\***

Supports final film completion. Cast and crew collaborative investment, every \$1 invested counts as \$0.50 toward backend participation.

\* ‘Investment Value’ refers only to returns calculated from available ‘Distributable Receipts’.

# INVESTOR PAYOUT STRUCTURE

All returns are conditional on funds being available. This is a summary only, full details are outlined in the Subscription Package.



## 1 DEVELOPMENT INVESTORS

- Principal repaid
- 20% preferred return
- 2x share of Distributable Receipts (if any)

*Every \$1 is treated as \$2 when calculating their share of Distributable Receipts.*

## 2 PRODUCTION INVESTORS

- Principal repaid
- 20% preferred return
- 1.2x share of Distributable Receipts (if any)

*Every \$1 is treated as \$1.2 when calculating their share of Distributable Receipts.*

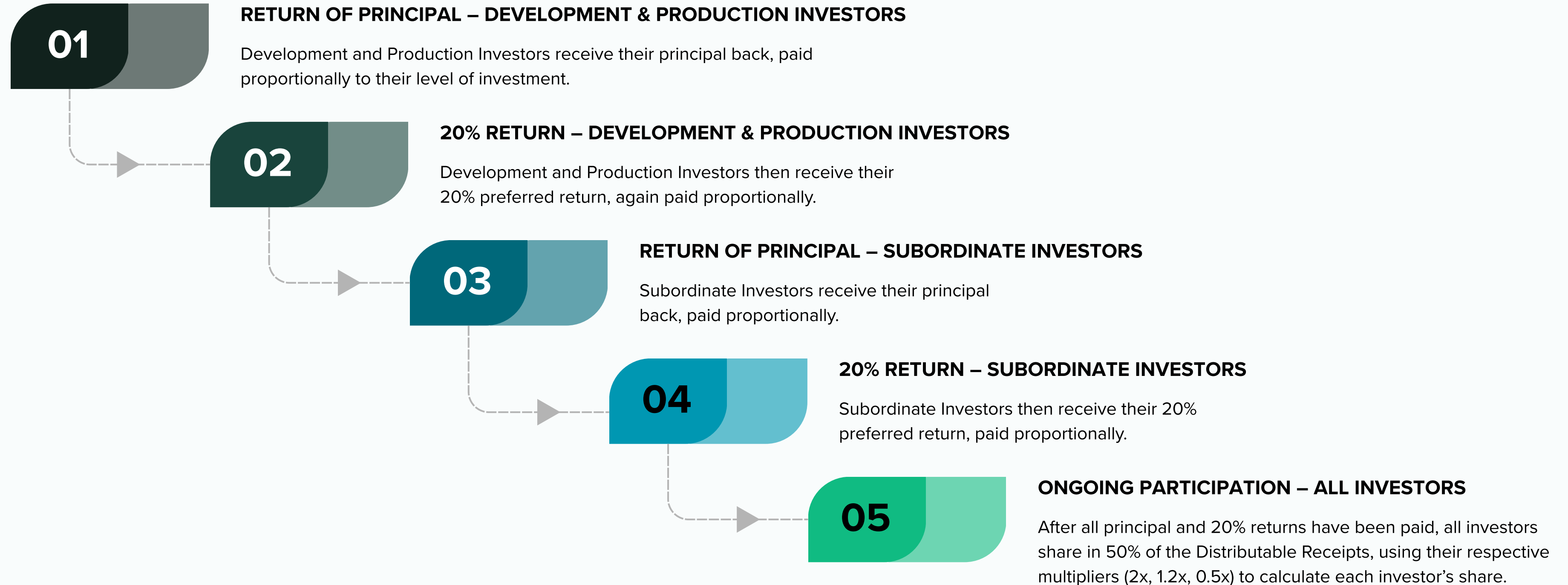
## 3 SUBORDINATE INVESTORS

- Principal repaid
- 20% preferred return
- 0.5x share of Distributable Receipts (if any)

*Every \$1 is treated as \$0.50 when calculating their share of Distributable Receipts.*

# INVESTOR PAYOUT WATERFALL

When funds are available to distribute, they are paid out in the following order:



# THE TEAM BEHIND THE RESCUE

A PROVEN GROUP OF AWARD-WINNING FILMMAKERS,  
PRODUCERS, AND STRATEGIC LEADERS



## JARED VAN BERKEL

PRODUCER | CO-DIRECTOR

Founder of Fantail Studios, Jared has led the production of 14+ internationally released, faith-driven projects reaching audiences in over 20 countries, including The Amazon Adventure and Mana Atua – The Power of God.



## DARREN SIMMONDS

PRODUCER | CO-DIRECTOR

Darren Simmonds is a multi-award-winning director whose work spans documentary and narrative film. His projects have screened and won awards at respected international film festivals. He is the founder of White Horse Productions and co-director of Mana Atua – The Power of God.



## ORLANDO BRAUN

PRODUCER

Orlando Braun is an award-winning producer with extensive international festival recognition. He has worked in both New York and Los Angeles with organisations including Tribeca Film, Platinum Studios, and Film Independent.



## GRANT BRADLEY

EXECUTIVE PRODUCER

Grant Bradley is one of New Zealand's most experienced producers, with 55 films produced across 11 countries and cumulative production values exceeding \$400 million. A veteran of Cannes, AFM and Berlin, his recent credits include Brave the Dark and Legacy of Lies.



## DAN BOSKO

EXECUTIVE PRODUCER

Howard Ong

With over 30 years of stage acting experience, Dan is known for standout roles including the Tin Man in The Wizard of Oz and the lead in The Christians. He now brings his passion for transformative film and performance to The Rescue.



## JOSH VAN BERKEL

EXECUTIVE PRODUCER



Josh van Berkel is an entrepreneur and church leader who brings strong operational leadership, communication skills, and relational networks to the team. With extensive experience in leadership and business ventures, he supports the production and outreach vision of The Rescue.



## JUDAH HOOVER

EXECUTIVE PRODUCER

Judah Hoover is an experienced executive and entrepreneur with a strong background in business leadership, investment, and community engagement. He brings strategic oversight and practical execution to The Rescue, and has previously served as an Executive Producer on Brave the Dark.

# WHY INVEST IN THE RESCUE?

HOPE DESERVES THE BIG SCREEN



From the team behind multiple award-winning international releases, Fantail Studios has produced 14+ faith-driven projects reaching audiences in over 20 countries.



The Rescue screenplay, a true story with emotional depth has been internationally recognized and is a finalist for Best Screenplay at the ICVM Crown Awards.



Backed by an accomplished production team with over 55 feature films to their credit. The Rescue brings together decades of proven industry experience and talent.



Rated 4.3 / 5 by Angel Studios' Torch Guild, showing strong audience resonance and global market appeal.



The Rescue balances financial opportunity with transformational impact: a chance to invest in a story that reaches millions worldwide while offering meaningful returns.



Ongoing discussions with Angel Studios and major international distributors position The Rescue for a global theatrical release across thousands of screens.

To discover more about this amazing true story and to hear from Amy herself, please visit:

**[WWW.RESCUE.FILM](http://WWW.RESCUE.FILM)**

There you can watch a one-minute teaser on The Rescue and experience Amy's powerful 20-minute testimony documentary.

**For more information on how to partner with us, please contact the film's Producer, Jared van Berkel.**

jared@fantailstudios.com

USA: +1 (470) 921-1067

NZ: +64 27 357 5872



**WWW.FANTAILSTUDIOS.COM**